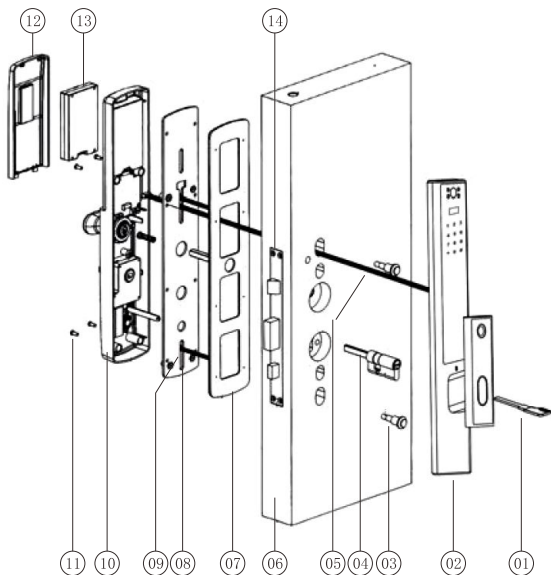


Structure of automatic intelligent lock

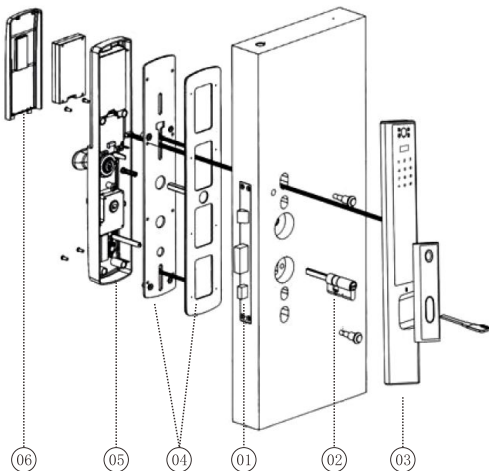


Number	Name	Number
01	Leaf key	2
02	Front lock body	1
03	Fixed column	2
04	Lock cylinder	1
05	Main board connect cable	1
06	Door	
07	Silicone pad	1

Number	Na me	Number
08	Rear floor panel	1
09	M5 fixing screw	2
10	Rear panel assembly	1
11	M4 set screw	4
12	Battery cover	1
13	Lithium battery	1
14	Lock body	1

Installation diagram of automatic intelligent lock

Installer sketch:



Installation steps

1. Install the lock body first and fix the lock body with M5 "6 screws (4 pieces)
2. Install the lock cylinder, fix the lock cylinder with the lock cylinder fixing screw, ensure that the copper bar of the lock cylinder rotating shaft faces the room, and the length is 18- 20mm of the exposed door surface (as shown in Fig.2, the lock cylinder must be installed and then the copper bar should be cut)
3. Install the front panel;
4. install the bottom plate (with rubber pad), and fix the two studs of front panel with M5 screws
5. Connect the front and rear panel data lines, and then install the rear panel according to the hole position, and fix it with 4 M4 screws;

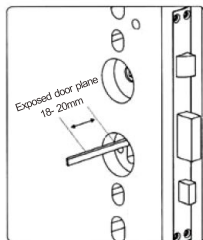


Fig.2

2. Product layout:

- Door opening: fingerprint, password, IC card, mechanical key, wechat mini program and other ways to open the door, bring you a different door experience (specific configuration subject to the actual);
 - Fingerprint: Advanced semiconductor sensor, 360-degree recognition Angle, wide fingerprint acquisition area, high resolution, effectively prevent false fingerprints;
 - Password: Using fashionable and advanced touch screen key technology, it can add 12 irrelevant passwords before and after the correct password, effectively preventing the embarrassment of entering the password when many people walk together;
 - Dual verification mode: fingerprint, password and card can be set to verify the lock, only two users can be verified at the same time to open the door, suitable for special occasions;
 - User management: The administrator has the highest authority (ordinary users can only open and close the door operation), can edit and set the lock, the number of administrators is 9 (can be fingerprint, password, card), the total capacity of 300;
 - Alarm function: the machine has anti-warp alarm, low-voltage alarm, trial and error alarm;
 - Standby power supply: When the battery is exhausted, the use of 5V mobile power supply can be emergency power supply to the door lock;
-

3.Matters need attention:

- After the new lock is installed, restore the initialization operation to clear the fingerprints recorded during installation and debugging.
 - The handle is the key part of opening and closing the door, and its flexibility directly affects the use of the door lock, so do not hang objects on the hand;
 - When collecting fingerprints, the finger strength is moderate, do not exert strong pressure, to prevent the fingerprint collection head scratch;
 - Battery use time should not be too long, it is generally recommended to charge at least once every 3 months, otherwise battery leakage will damage the smart lock;
 - The lock uses 8.4V high-performance lithium battery, when the first "insufficient power, please replace the battery", according to different battery capacity can also open the door about 100 times, this time should be charged in time, so as not to cause inconvenience due to battery exhaustion;
 - If the fingerprint/card/password is entered incorrectly for 5 times, the alarm will be sounded, and the door lock cannot be used within 90 seconds;
-

4.User Guide:

- Initialization operation:

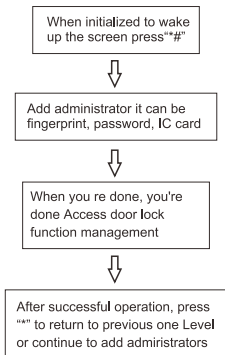
Press the small hole in the middle of the unlocking/closing button on the rear panel using the card pin and hold for 5 seconds. The voice prompts "Initialization success" and the factory engineering password is "123456" to open the door. After entering the administrator information, the engineering password "123456" will be automatically deleted.

■ Access door lock function management(No networking mode):

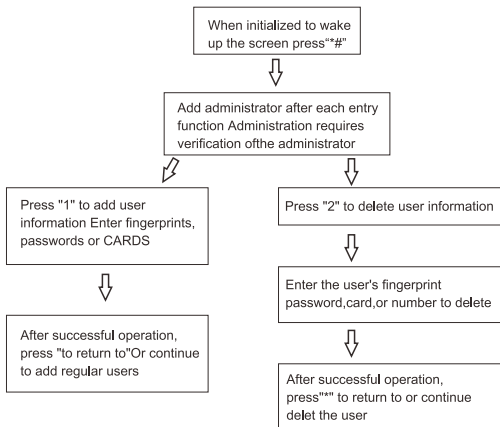
Under normal conditions

"**" returns health/exit key/delete health

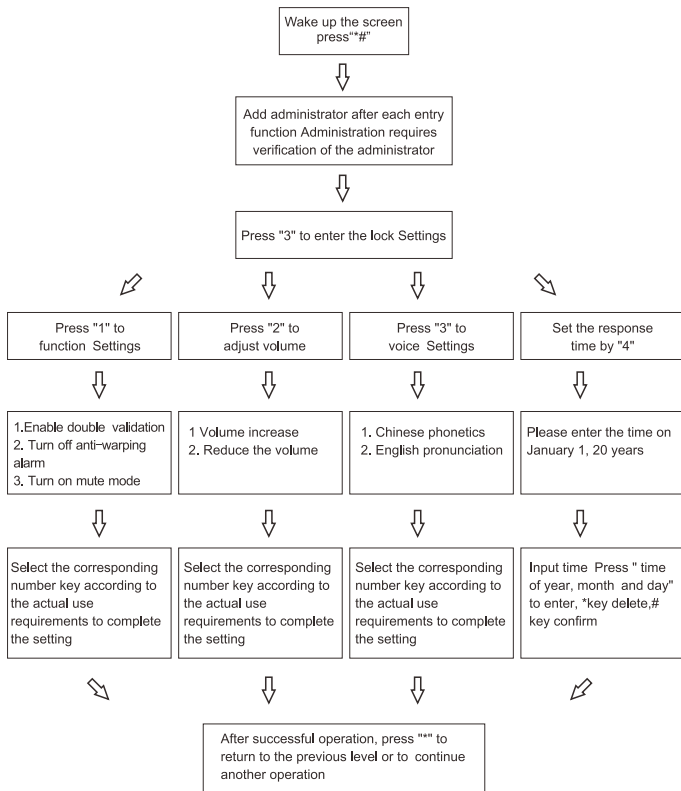
"#" confirm key/enter key/repeat voice broadcast



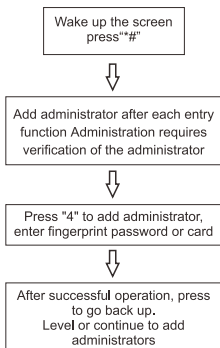
■ Add users, delete users:



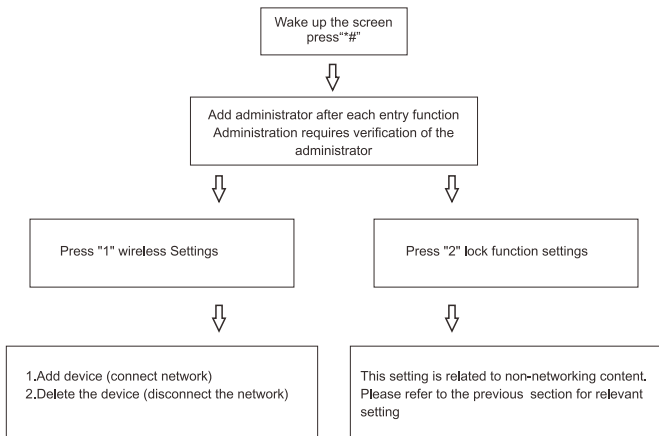
■ Door lock Settings:



■ Add administrator:

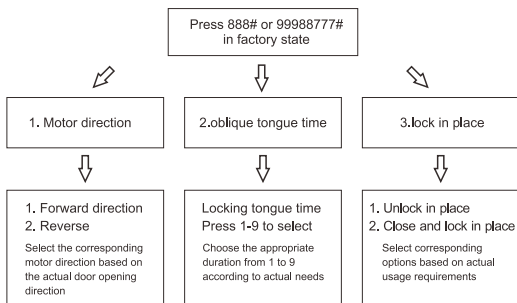


■ Access door lock management function (with networking module):



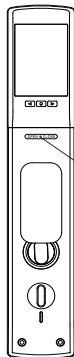
■ Maintenance menu:

Maintenance menu, for installation and debugging personnel to use, please operate carefully



■ Restore factory Settings:

■ Other Instructions:



Press and hold this
button for 5 seconds
before releasing it

1. If the incorrect password is entered continuously for more than 5 times within five minutes, the keyboard **will** be locked for 90 seconds, 90 seconds

2. The internal system does not respond to any operations, and can be accessed by the administrator through the settings button on the back board Except.

3. Password anti peeping function: When opening the door with a password, enter the password as follows: XXX

Password XXX; You can add some irrelevant codes before and after the password, and then press # to confirm.

The password must be included in the input.

4. The system **will** automatically exit if no action is taken after 12 seconds of each operation

5. When the voltage is below 6.9V, it **will** automatically alarm every time the lock is opened. After the alarm is triggered, the rear door lock can Unlock 200 times, exceeding the number of times **will** prohibit unlocking, and it is necessary to replace it with a new one before unlocking the number of times Battery.